

PERFUME STICK

NFNC-SP0375-031002

FEATURES

-A solid perfume stick with 0% alcohol and a combination of oil and water-based scents that provides a long-lasting yet comfortable scent whenever applied.

-Formula features a double-core that is made up of an oil balm exterior and cream interior that leave the skin feeling soft and moisturized without feeling sticky.

-Top Note: Strawberry
-Middle Note: Jasmine
-Base Note: Caramel

KEY INGREDIENTS

Hedera Helix (Ivy) Leaf Extract:
soothes the skin and provides anti-inflammatory benefits

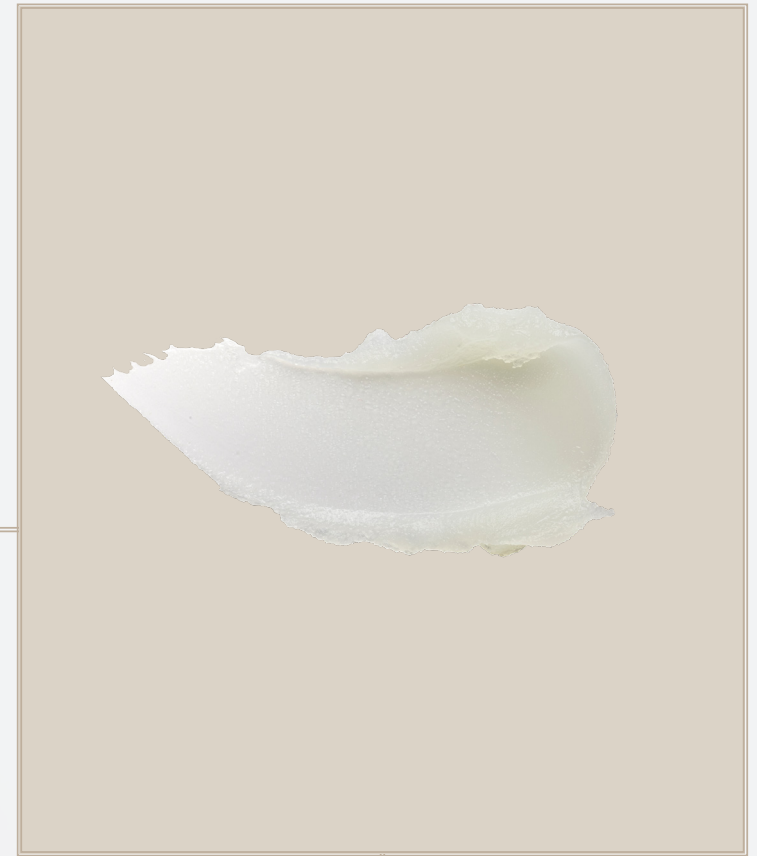
Calm Therapy Complex: a blend of Bergamott, Lavender, and Chamomile

Jeju Volcanic Pine Mushroom Powder: helps absorb sebum, waste and shrink the appearance of pores

EFFICACY

12-Hour Wear

Non-Sticky



crueltyfree
andvegan

DEWY GLEAM PRIMER

NFKI-0BA1-LH23-5

FEATURES

-A gel-based primer with more than 65% of skin care ingredients that leave the skin feeling light and refreshingly moisturized.

-Formula has a smooth, satin glow finish that lasts all day.

KEY INGREDIENTS

Film Former:
helps the formula adhere to the skin, while also providing a silky and never sticky finish

Spherical & Plate Powder: absorbs oil from the skin

Four Types of Pearl: adheres to the skin evenly and provides the skin with a natural glowing effect

EFFICACY

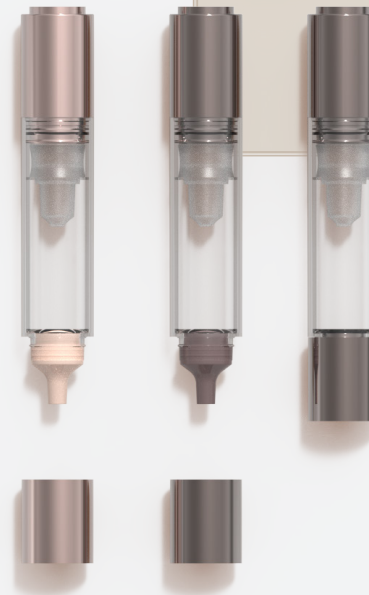
D4/D5/D6-free

Talc-free

Moisturizes

Primes

Fast Absorbing



PAIR WITH: PILOT AMPOULE



crueltyfree
andvegan

SILP-FREE CONCEALER

NFKI-0BA67-LA20-1

FEATURES

-A silicone and PEG-free concealer that applies seamlessly for a high coverage finish.

-Formula adheres to the skin to retain moisture and provide long-wear.

KEY INGREDIENTS

Shine Powder:
a non-silicone treatment agent that leaves the skin soft and smooth

High Molecular Weight Polymer:
helps the formula adhere to the skin and maintain moisture

VARIETIES

Light NFKI-0BA4-LG6-1
Medium NFKI-0BA5-LG6-1
Dark NFKI-0BA6-LG6-1

EFFICACY

Long-wearing
Moisturizes
Blends Easily
Talc-free



PAIR WITH: MONUMENT DROPPER



crueltyfree
andvegan

STICK BRONZER

NFKI-0BA304-LJ27-6

FEATURES

-A bronzer stick with skincare benefits.

-Formula melts into the skin, providing a subtle sun-kissed warmth that glows.

KEY INGREDIENTS

Natural Coffee Oil:
rich in tocopherol,
it supports skin
hydration and
strengthens the skin
barrier

**Multi-Network Wax
and Emollient Blend:**
combined to provide
a stable stick
hardness that glides
weightlessly across
the skin, providing
an even dispersion of
pearl

EFFICACY

Easy to Blend

Buildable



PAIR WITH: SELENE STICK



crueltyfree
andvegan

BLOOMING SKIN BALM

NFKI-0BA1-LJ18-4

FEATURES

-A translucent, illuminating stick that provides the skin with a fresh and dewy glow.

-Formula is non-sticky and lightweight.

KEY INGREDIENTS

Nano-Gel Network:
a tight networks structure that holds together the oil and pearl, allowing it to apply seamlessly to the skin

EFFICACY

PEG-free



PAIR WITH: AMMO STICK

PEARL HIGHLIGHTER STICK

NFKI-0PSS1-LK4-5

FEATURES

-A moisturizing highlighter stick that leaves the skin with a prismatic pearl finish.

-Formula applies smoothly and can be applied to both face and body for a buildable buildable glow.

KEY INGREDIENTS

Lacquer Bark Wax and Rice Bran Wax Blend:

allow the pearls to
seamlessly and evenly
apply to the skin

Spherical and Plate Powder:

absorb oil from the
skin, while also filling
in gaps to create a
smooth appearance

EFFICACY

D5/D6-free



PAIR WITH: SELENE STICK



crueltyfree
andvegan

VEGAN SETTING POWDER

NFKI-0PO101-LD5-2

FEATURES

-A finely-milled vegan setting powder with an airy texture.

-Formula is transparent and applies thinly and evenly, to rid of oil and set makeup in place.

KEY INGREDIENTS

Porous Powder:
absorbs unnecessary
oil and sweat, creating
a smooth and soft skin
surface

EFFICACY

Coral Reef-safe



PAIR WITH: LUMINA JAR

EYESHADOW KIT

FEATURES

-An eyeshadow kit that features various textures including shimmer, jelly, matte, mosaic, matte & pearl, glitter, nacre glitter, and hidden.

Advanced Formulas:

-Mosaic eyeshadows are handmade with a mix of matte and glitter shadows, giving off a holographic pearly finish.

-Laser eyeshadows can be done in custom designs and are applicable on various formulations.

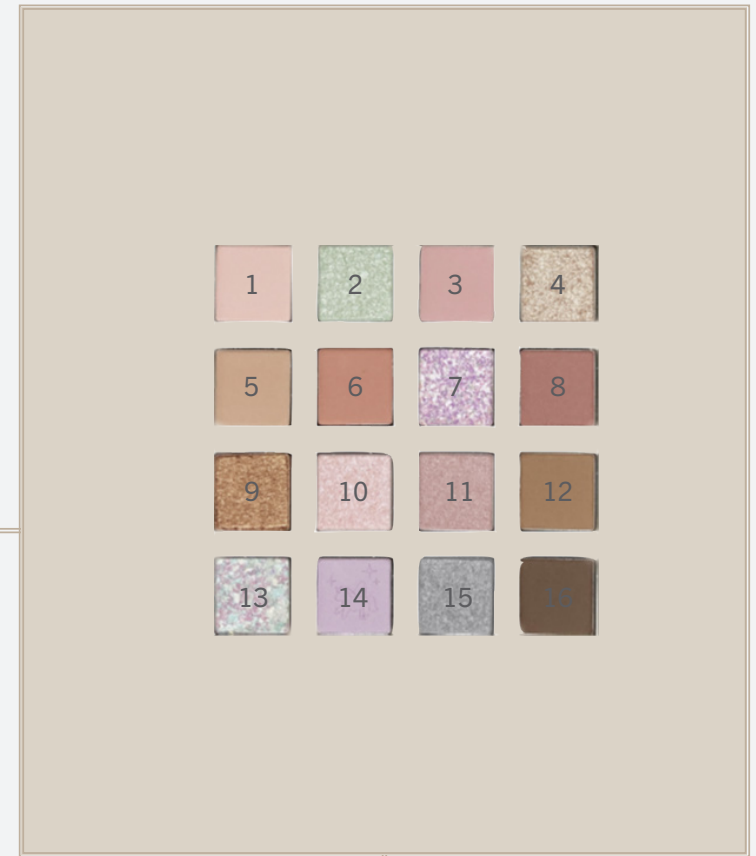
-Hidden eyeshadows feature inverted glitter, which allows the swatch to be different than the appearance of the shadow in the pan, expressing a clear luster of color.

KEY INGREDIENTS

Shimmer: 1, 11	Jelly: 2	Matte: 3, 6, 9, 12, 14, 16
Mosaic: 7	Matte & Pearl: 8	Glitter: 4, 10
Nacre Glitter: 5, 13	Hidden: 15	

VARIETIES

NFKI-0ES118-LC17-2 (Matte)	NFKI-0ES5-LC18-2 (Matte)
NFKI-186ES279-KK4-3 (Jelly)	NFKI-0ES913-LC16-6 (Glitter)
NFKI-0ES3-LC18-3 (Matte)	NFKI-0ES914-LC22-5 (Shimmer)
NFKI-449ES4-LF2-5 (Glitter)	NFKI-0ES915-LC22-6 (Matte)
NFKI-273ES35-KE20-5 (Nacre Glitter)	NFKI-0ES13-LC21-5 (Nacre Glitter)
NFKI-0ES117-LC17-2 (Matte)	NFKI-0ES119-LC17-1 (Matte)
NFKI-0ES120-LC23-5 (Mosaic)	NFKI-0ES15-LC16-4 (Hidden)
NFKI-0ES8-LC22-3 (Matte & Pearl)	NFKI-0ES916-LC23-5 (Matte)



PAIR WITH: 9-WELL PALETTE



TRANSFORMING POWDER

FEATURES

-With the addition of water, these powders transform into a creamy formulation that can be used as either an eyeshadow or eyeliner depending on application.

-Formula contains plant-derived moisturizing ingredients that keep the delicate eye area moisturized and not dry or irritated.

KEY INGREDIENTS

Moisturizer and Powder Blend: when applied with water, combine to create a creamy texture that fixes to the skin once dried

Plate Oil: improves adhesion to the skin, providing a matte finish

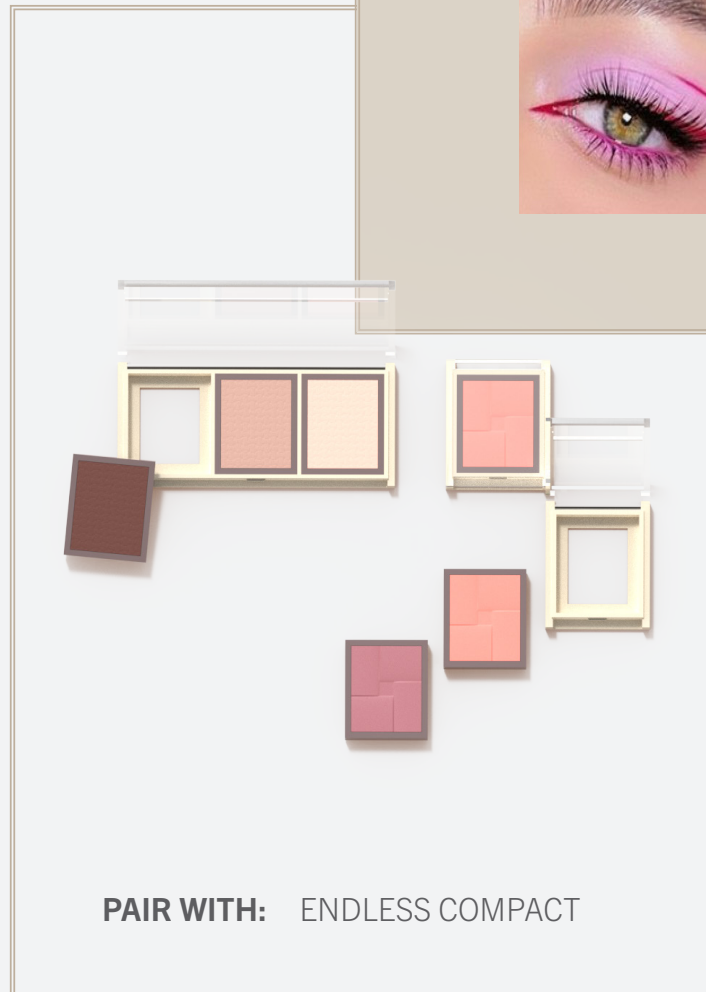
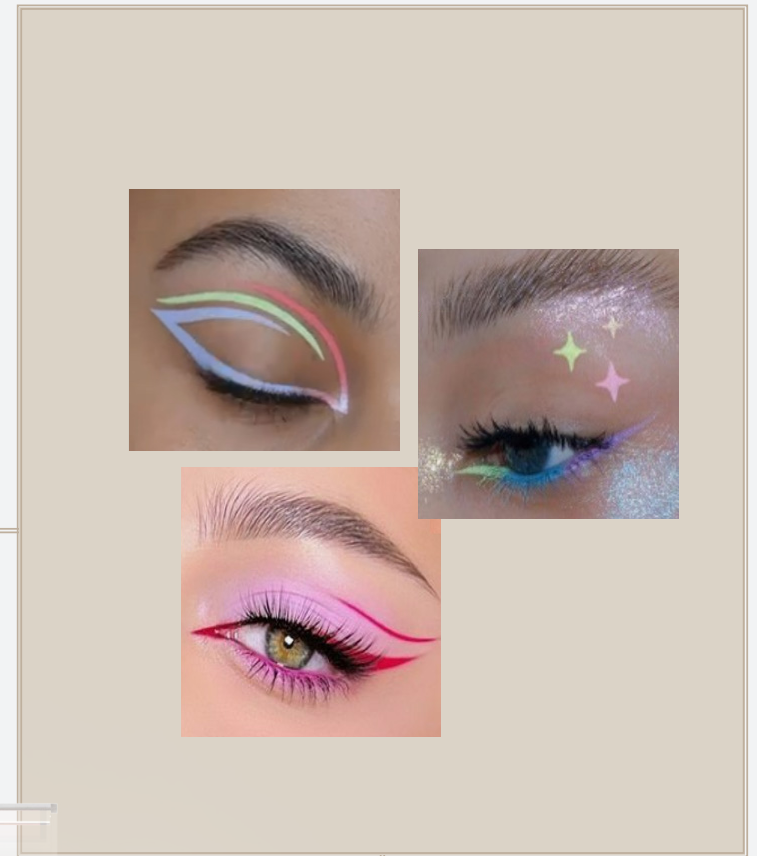
Soft Fitting Wax: aid in long-wear and maintaining skin moisture

VARIETIES

NFKI-0ES126-LJ20-8 (Blue)
NFKI-0ES127-LJ20-2 (Yellow)
NFKI-0ES128-LJ20-2 (Purple)
NFKI-0ES129-LJ20-4 (Green)

EFFICACY

Silicone Free (differs between shades)



PAIR WITH: ENDLESS COMPACT



COLOR LIGHTING TOPPER

FEATURES

-A pearlescent topper that appears white, but reveals different hidden colors depending light reflection.

-Formula is multi-use and can be used alone, as a topper, and even a highlighter.

KEY INGREDIENTS

Interference Pearls:
show different colors
depending on the light
that is reflected on it

**Borosilicate, SnO₂ +
TiO₂ Blend:**
provides vivid color
and higher saturation

VARIETIES

Various shades available



PAIR WITH: 9-WELL PALETTE



crueltyfree
andvegan

COLOR LIGHTING STICK

FEATURES

-A long-lasting highlighter stick that reveals hidden colors upon skin application.

-Formula is multi-use and can be used as both an eyeshadow and highlighter for brows and cupid's bow.

KEY INGREDIENTS

Ester Gel Coating:
creates a brighter and more vivid pearl color

Interference Pearls:
show different colors depending on the light that is reflected on it

Soft Fitting Wax:
aid in long-wear and maintaining skin moisture

VARIETIES

NFKI-0PSS1-LG15-4 (Gold)
NFKI-0PSS2-LH4-5 (Pink)
NFKI-0PSS4-LG15-3 (Blue)
NFKI-0PSS5-LH1-2 (Green)
NFKI-PSS3-LG29-2 (Purple)

EFFICACY

Talc-free

PEG-free



PAIR WITH: NOVA STICK

LIQUID HIGHLIGHTER

NFKI-OLS3-LI4-1 (Clear)

FEATURES

-A liquid highlighter that contains both pearls and pigments for a beautiful highlighting effect.

-Formula can be used with a thin or wide brush for differing applications.

KEY INGREDIENTS

Soft Fixing Polymer:
forms a thin layer on the surface of the skin that maintains moisture and enhances the formula's long-lasting effect

Water-Gel Matrix:
90% moisture content that holds the pearls and pigments in place

EFFICACY

Silicone-free

PEG-free

LVMH Regulation
Approved



PAIR WITH: MONUMENT DROPPER



crueltyfree
andvegan

LONG-WEAR LIQUID LINER

FEATURES

-A long-wearing liquid eyeliner that has one-swipe application that dries quickly.

-Formula contains a film layer that locks pigment in place for all-day wear that withstands even highly concentrated oil.

KEY INGREDIENTS

Film Former:
helps the formula
adhere to the skin,
locking in color

VARIETIES

NFKI-116LEL1-LH22-2 (Lavender)
NFKI-116LEL2-LH9-2 (Green)
NFKI-116LEL3-LH19-1 (Pink)

EFFICACY

D5-free
PEG-free
Talc-free



TOPPING SHADOW

FEATURES

-A powder eyeshadow that features a matte base shadow and stampable pearl shadow.

-Shadows can be used individually (base shadow & stamp) or mixed together to create a custom blended shade.

-Stamping designs can be customized and are easy to apply. Gently use your finger as a stamp, pressing it against the pearl shadow, then apply anywhere on your face.

KEY INGREDIENTS

Volatile Oil Spray:
locks in the pearl shadow, allowing it to act like a stamp

VARIETIES

NFKI-0ES837-LG26-3 (Warm)

NFKI-0ES836-LG26-4 (Cool)



PAIR WITH: TRIANGLE QUAD



crueltyfree
andvegan

pH LIP & CHEEK OIL

FEATURES

-A pH reacting lip and cheek oil than changes the visible color of the formula to your own unique shade of pink once applied.

-With 99.9% natural origin, the glossy formula adheres without stickiness, maintaining moisture in the skin.

KEY INGREDIENTS

Jojoba Seed Oil:
moisturizes and
nourishes the skin

Sunflower Seed Oil:
maintains moisture

Indian Mulberry Tree:
provides antioxidant
benefits

VARIETIES

NFKI-690LG2-LG28-1 (Green)
NFKI-690LG4-LH11-2 (Pink)
NFKI-690LG10-LH11-1 (Blue)
NFKI-690LG7-LH12-3 (Orange)

EFFICACY

LVMH Regulation
Approved



PAIR WITH: SQUARE LIPGLOSS




crueltyfree
andvegan

BODY SHIMMER OIL

FEATURES

-A gel-type oil that spreads smoothly and seamlessly on the skin to provide a silky, non-sticky and moisturizing application.

-Formula utilizes various glitter sizes to create a three-dimensional glow to the skin.

KEY INGREDIENTS

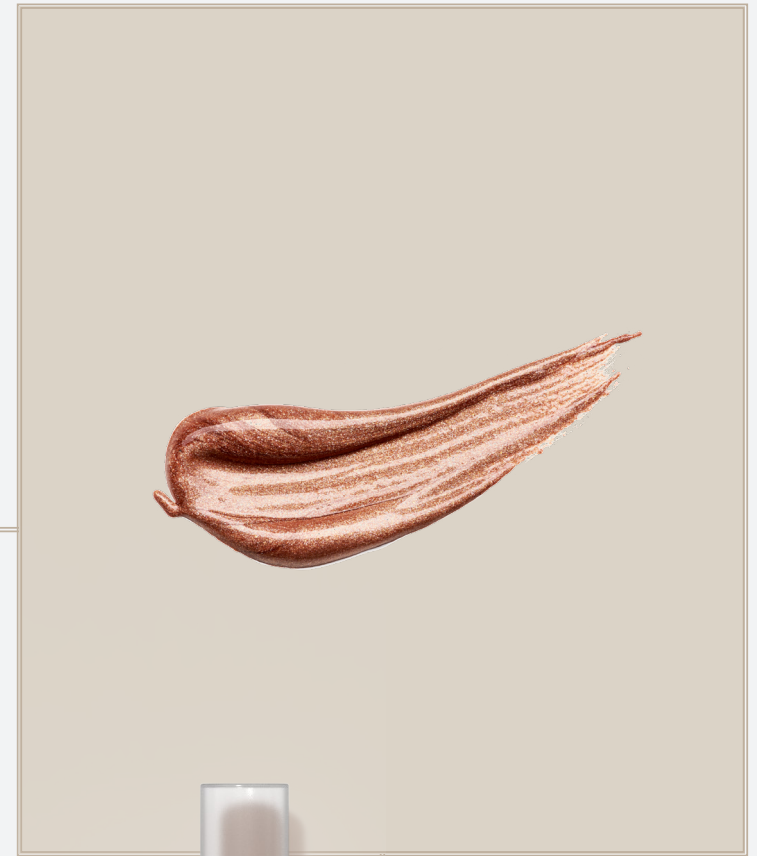
Oils, extracts and butters vary by shade, but can be customized.

VARIETIES

NFKI-0BA100-LF23-11 (Peach)
NFKI-0BA101-LF23-13 (Grape Fruit)
NFKI-0BA102-LF23-13 (Mango)
NFKI-0BA103-LG6-14 (Litchi)
NFKI-0BA104-LG6-15 (Berry)

EFFICACY

PEG-free
D5-free



PAIR WITH: PURITY PUMP



crueltyfree
andvegan